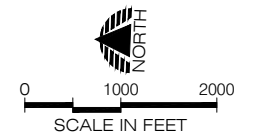
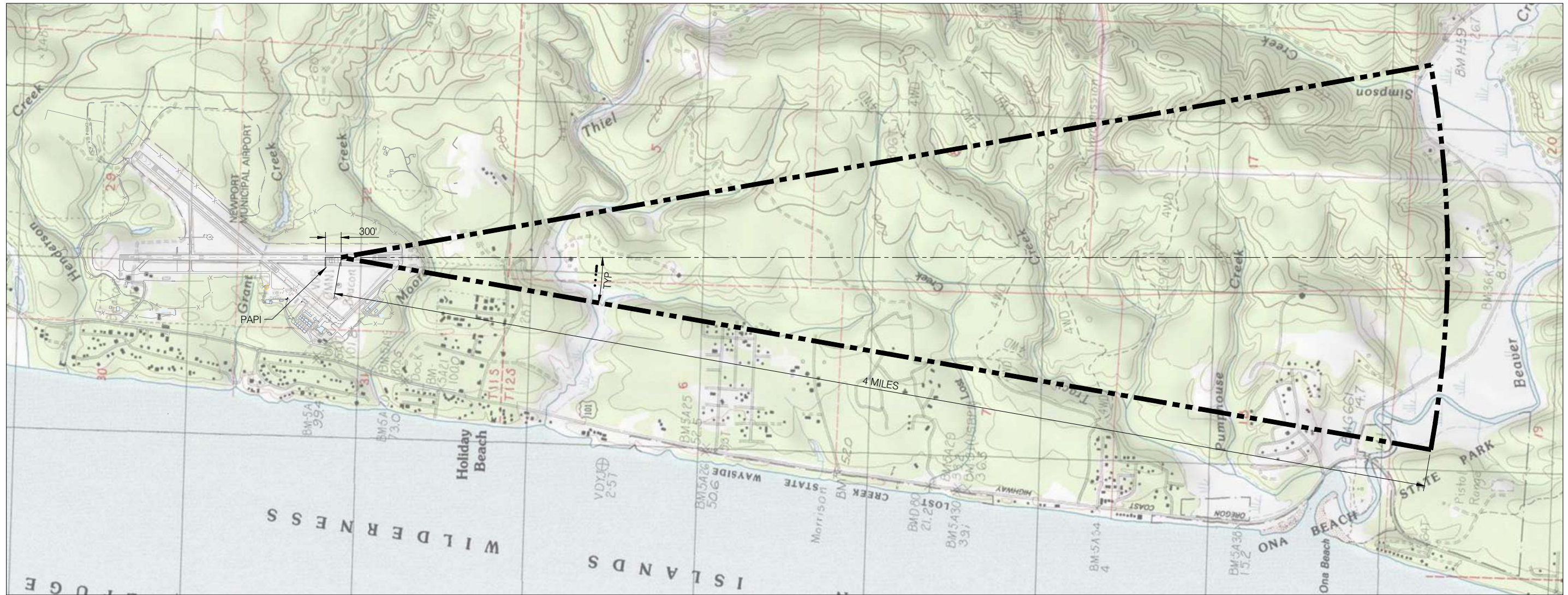


NEWPORT MUNICIPAL AIRPORT  
 RUNWAY 16-34 REHABILITATION  
**RUNWAY 16 PAPI OBSTACLE  
 CLEARANCE SURFACES OCS**

**PRECISION APPROACH**  
**ENGINEERING**  
 5125 South e th Street  
 rvall, R 97333  
 541•754•0043

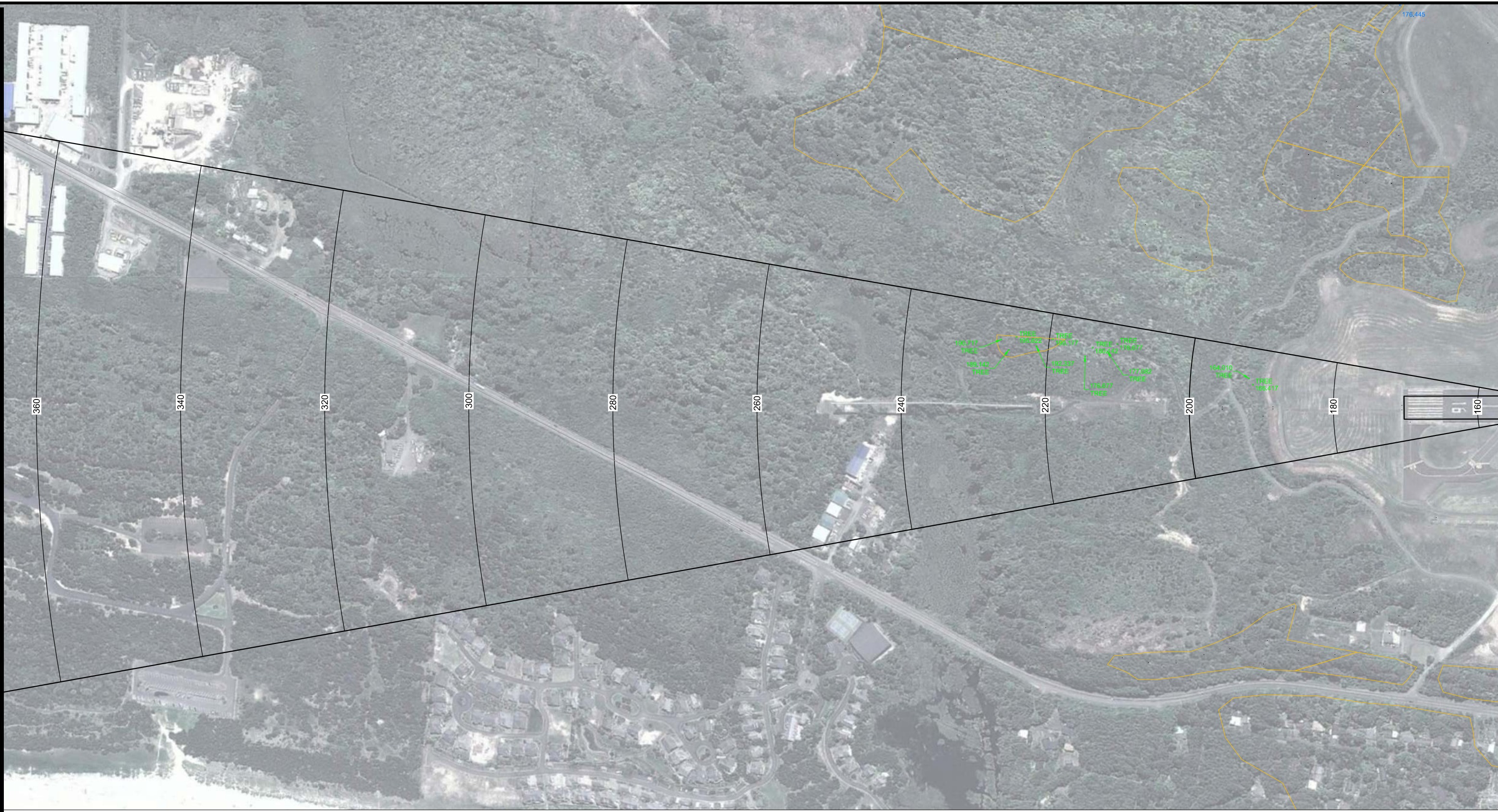


07/17/15 - 12:50pm - jwade - P:\MNP\T000-CLIENT\0400CAD\GRAPHICS\NPT-EXH-PAPI\_OCS.dwg



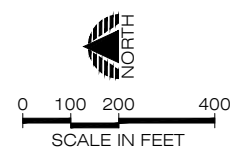


07/17/15 - 12:51pm - jwade - P:\MNP\008-RW 16-34 Rehab-Dsn\0400CAD\DWG\AGIS-OS-plus-CCS.dwg



**LEGEND**

- X TREE 262.639 OBSERVED OBJECTS > 15' BELOW APPROACH SURFACE
- X TREE 262.639 OBSERVED OBJECTS 0' - 15' BELOW APPROACH SURFACE
- X TREE 262.639 OBSERVED OBJECTS PENETRATING APPROACH SURFACE
- 261.391 APPROACH SURFACE ELEVATION AT OBSERVED OBJECT
- OBSERVED OBSTRUCTION AREA

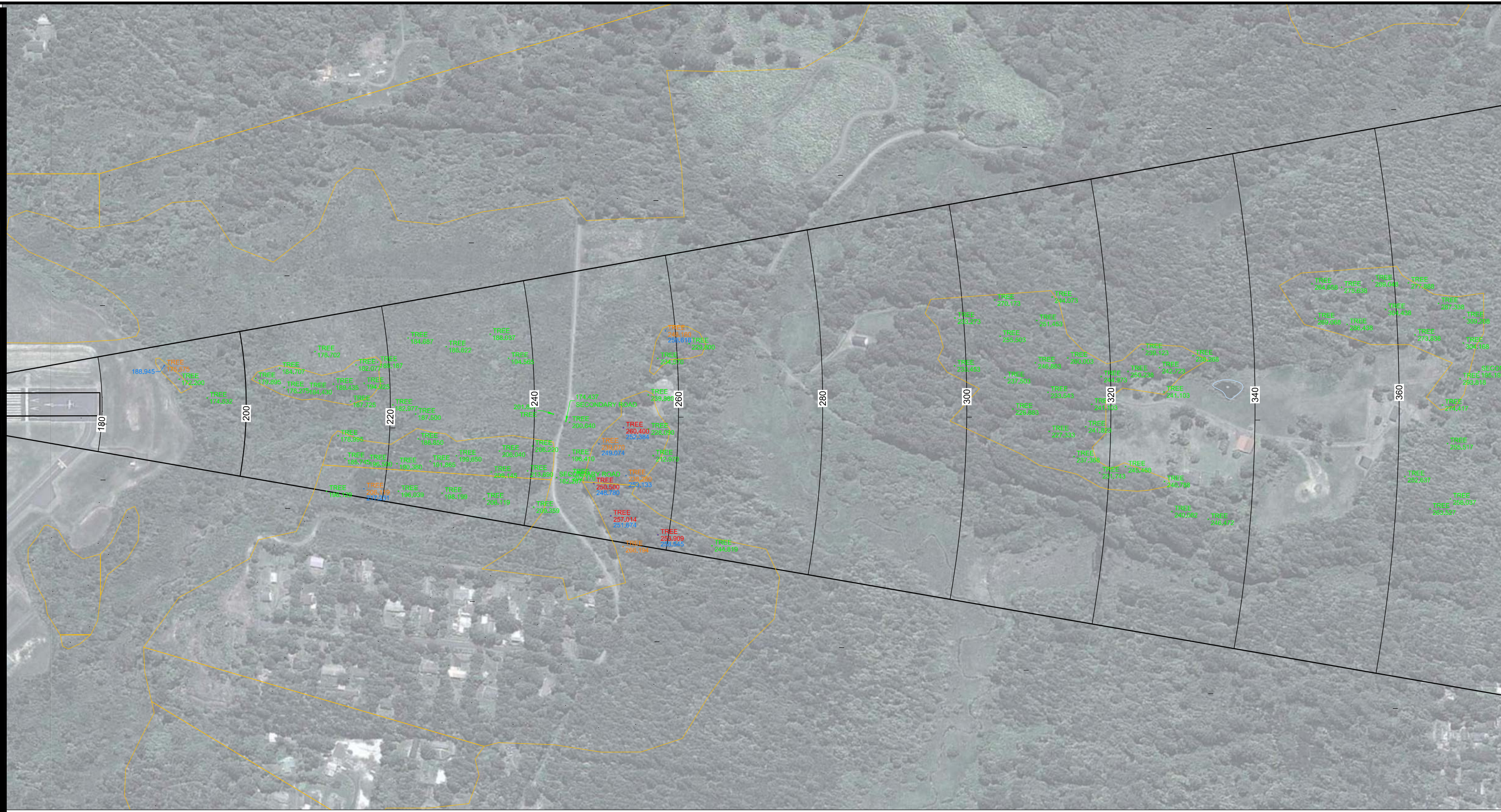


**PRECISION APPROACH**  
**ENGINEERING**  
 119 Grand Ave, Suite D  
 Bellingham, WA 98225  
 360•733•1567

NEWPORT MUNICIPAL AIRPORT  
 RUNWAY 16-34 REHABILITATION  
**RUNWAY 16 PAPI OBSTACLE  
 CLEARANCE SURFACES OCS**

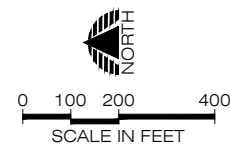


07/17/15 - 12:51pm - jwade - P:\MNP\T008-RW 16-34 Rehab-Dsn\0400CAD\DWG\AGIS-OS-plus-CCS.dwg



**LEGEND**

- X TREE 262.639 OBSERVED OBJECTS > 15' BELOW APPROACH SURFACE
- X TREE 262.639 OBSERVED OBJECTS 0' - 15' BELOW APPROACH SURFACE
- X TREE 262.639 OBSERVED OBJECTS PENETRATING APPROACH SURFACE
- 261.391 APPROACH SURFACE ELEVATION AT OBSERVED OBJECT
- OBSERVED OBSTRUCTION AREA

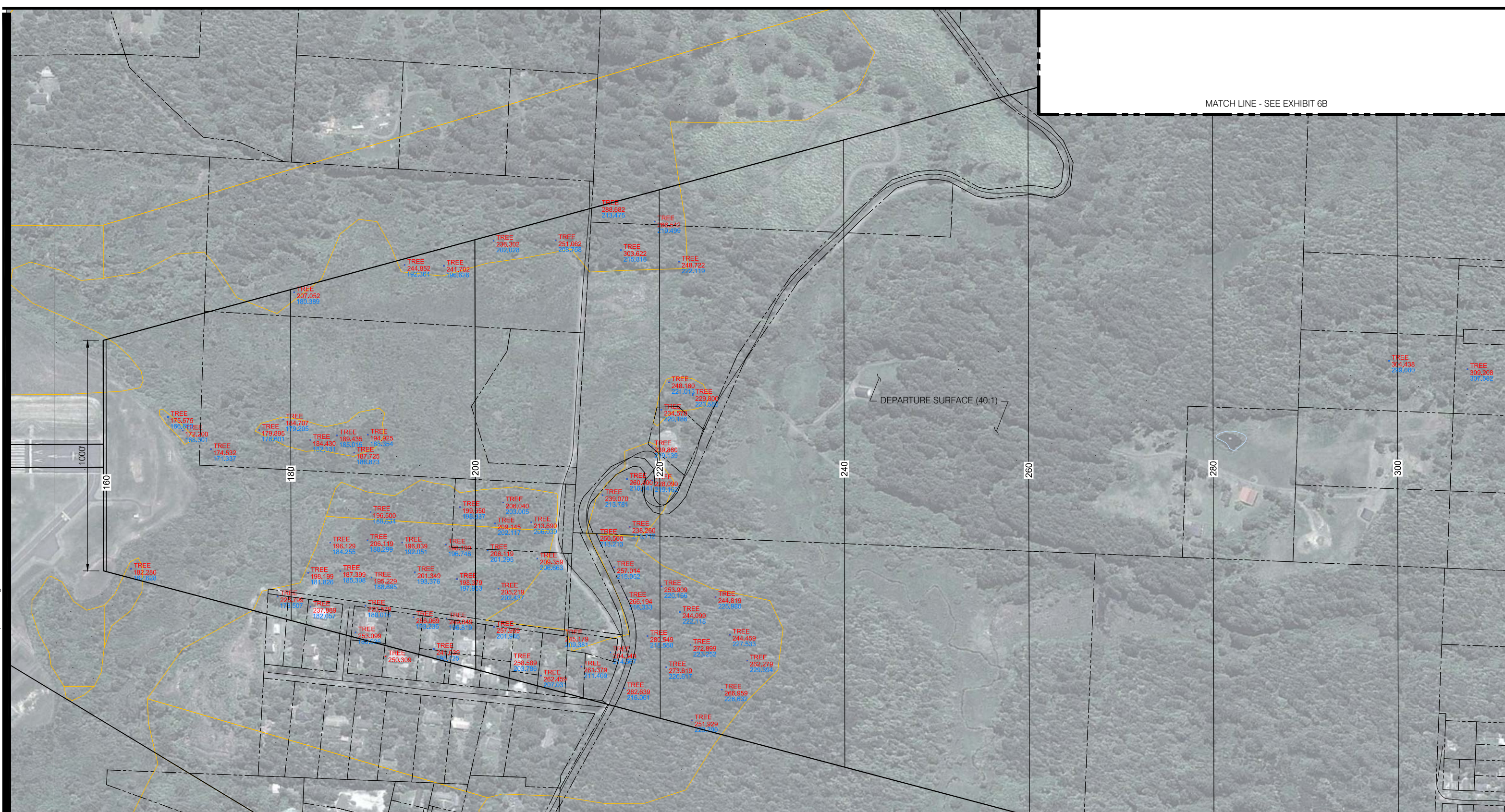


**PRECISION APPROACH**  
ENGINEERING  
119 Grand Ave, Suite D  
Bellingham, WA 98225  
360•733•1567

NEWPORT MUNICIPAL AIRPORT  
RUNWAY 16-34 REHABILITATION  
**RUNWAY 34 PAPI OBSTACLE  
CLEARANCE SURFACES OCS**

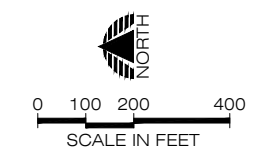


MATCH LINE - SEE EXHIBIT 6B



01/17/17 - 8:07am - JWade - P:\N\NPT006-RW 16-34 Rehab-Dsn\0400CAD\DWG\EXH-Departure.dwg

- LEGEND**
- X TREE 262.639 OBSERVED OBJECTS PENETRATING DEPARTURE SURFACE
  - 261.391 DEPARTURE SURFACE ELEVATION AT OBSERVED OBJECT
  - OBSERVED OBSTRUCTION AREA



**PRECISION APPROACH**  
ENGINEERING  
119 Grand Ave, Suite D  
Bellingham, WA 98225  
360•733•1567

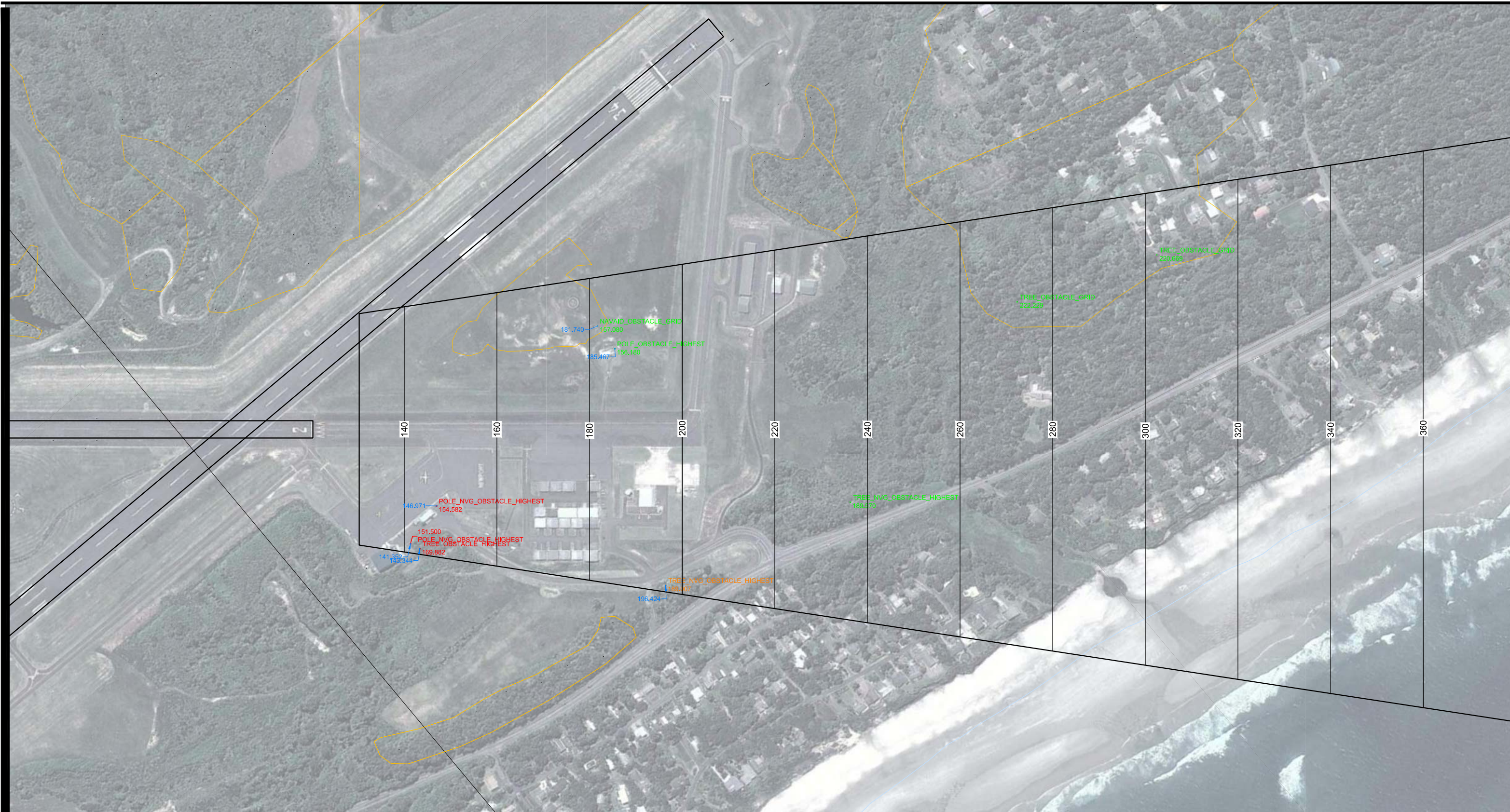
NEWPORT MUNICIPAL AIRPORT  
RUNWAY 16-34 REHABILITATION

**RUNWAY 34 DEPARTURE SURFACE**

JULY 2016

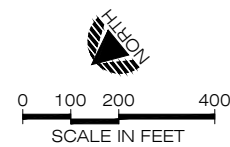


07/17/15 - 12:52pm - jwade - P:\MNP\T008-RW 16-34 Rehab-Dsn\0400CAD\DWG\AGIS-OS-plus-CCS.dwg



**LEGEND**

- X TREE 262.639 OBSERVED OBJECTS > 15' BELOW APPROACH SURFACE
- X TREE 262.639 OBSERVED OBJECTS 0' - 15' BELOW APPROACH SURFACE
- X TREE 262.639 OBSERVED OBJECTS PENETRATING APPROACH SURFACE
- ↑ 261.391 APPROACH SURFACE ELEVATION AT OBSERVED OBJECT
- OBSERVED OBSTRUCTION AREA

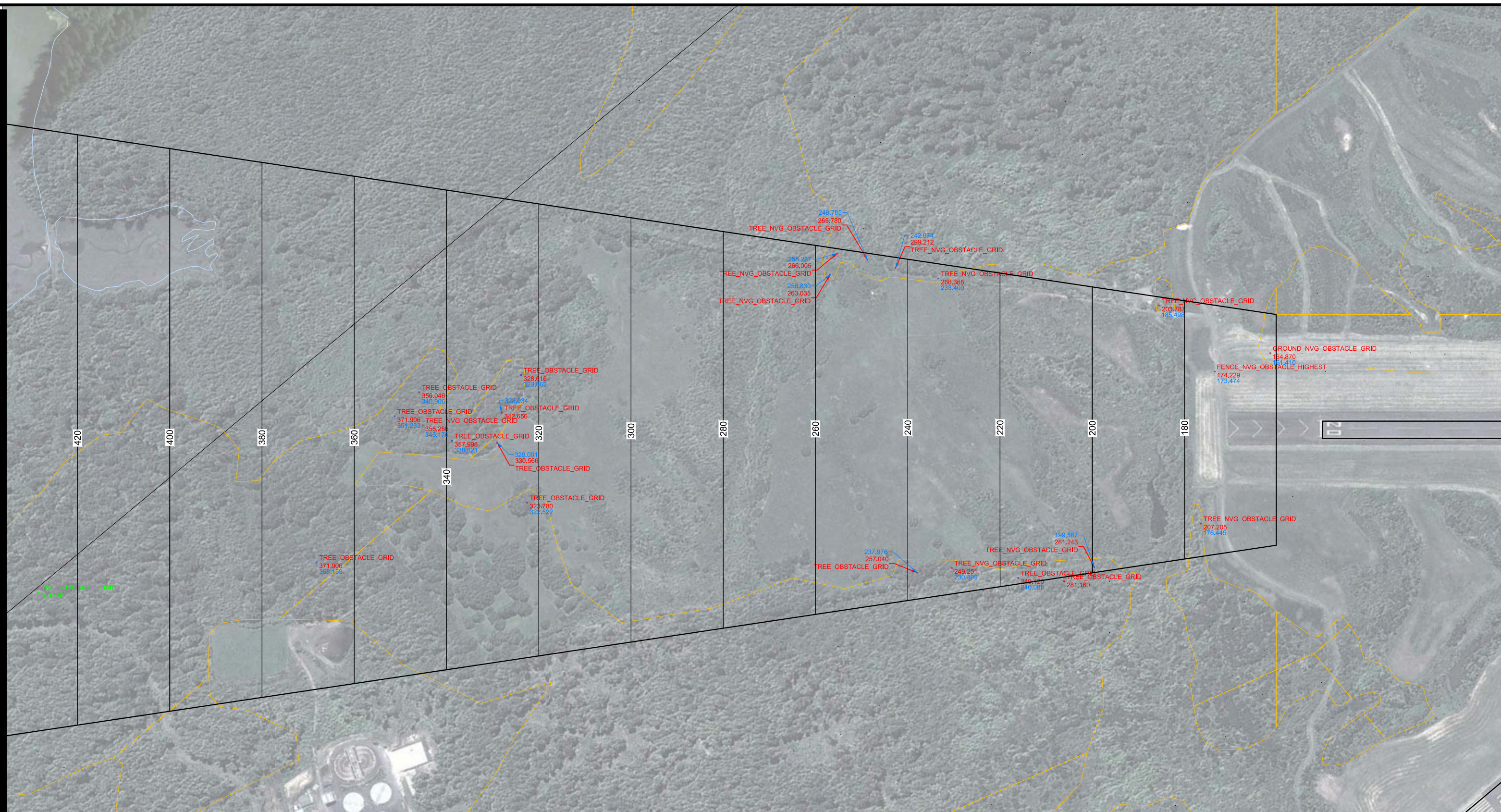


**PRECISION APPROACH**  
**ENGINEERING**  
 119 Grand Ave, Suite D  
 Bellingham, WA 98225  
 360•733•1567

NEWPORT MUNICIPAL AIRPORT  
 RUNWAY 16-34 REHABILITATION  
**RUNWAY 2 NON-VERTICALLY GUIDED  
 APPROACH OBSTRUCTIONS**

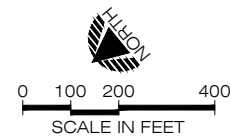


07/17/15 - 12:52pm - jwade - P:\MNP\T008-RW 16-34 Rehab-Dsn\0400CAD\DWG\AGIS-OS-plus-CCS.dwg



**LEGEND**

- x TREE 262.639 OBSERVED OBJECTS > 15' BELOW APPROACH SURFACE
- x TREE 262.639 OBSERVED OBJECTS 0' - 15' BELOW APPROACH SURFACE
- x TREE 262.639 OBSERVED OBJECTS PENETRATING APPROACH SURFACE
- 261.391 APPROACH SURFACE ELEVATION AT OBSERVED OBJECT
- OBSERVED OBSTRUCTION AREA



**PRECISION APPROACH**  
ENGINEERING  
119 Grand Ave, Suite D  
Bellingham, WA 98225  
360•733•1567

NEWPORT MUNICIPAL AIRPORT  
RUNWAY 16-34 REHABILITATION  
**RUNWAY 20 NON-VERTICALLY GUIDED  
APPROACH OBSTRUCTIONS**